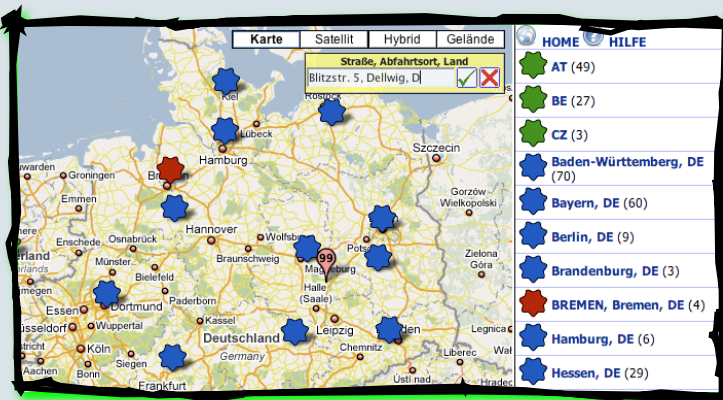
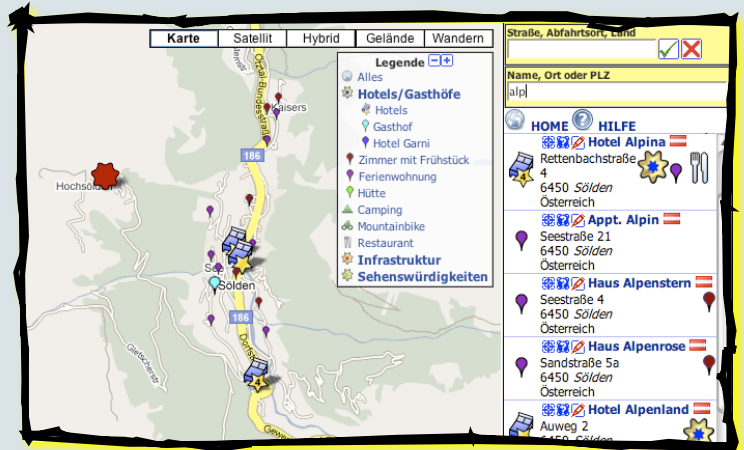


## Swift search - Vicinity search

Due to its pictorial language the search in a map is easy for most people who look for locations, but some still prefer to search in a list. Both methods are available in PinPoint simultaneously. To make searching even faster, we provide "quick-search". If you look for a certain place by names, location or zip codes, enter three characters and the result is displayed in the list. The more characters you enter the fewer results are in the list.

[Proceed to demonstration -->](#)



## Vicinity search

Sometimes you only know what you are looking for, but cannot locate your vicinity on a map. According to the motto: „Here I am. Where are the closest locations, in my vicinity?“

This is accomplished by the vicinity- or radius search. The visitor enters her current address or city and PinPoint shows the closest five locations. This place is marked with the „start“-flag in the map. The result shows the name and the straight-line distance to the closest locations.

If you don't know the address of the initial position it's enough to enter the city name. The „start“-marker can be moved by drag&drop to the desired position. The calculated result always refers to the current „start“-position.

## Integrated directions

When selecting a name the route is calculated and displayed immediately. That gives a quick overview of the alternatives and thus enables you to select the easiest approach. Nevertheless all other locations are still shown in the map.

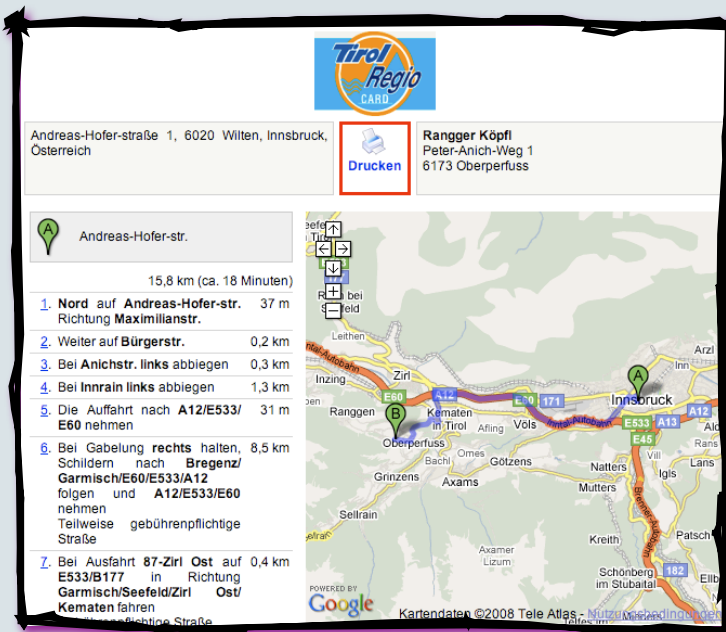
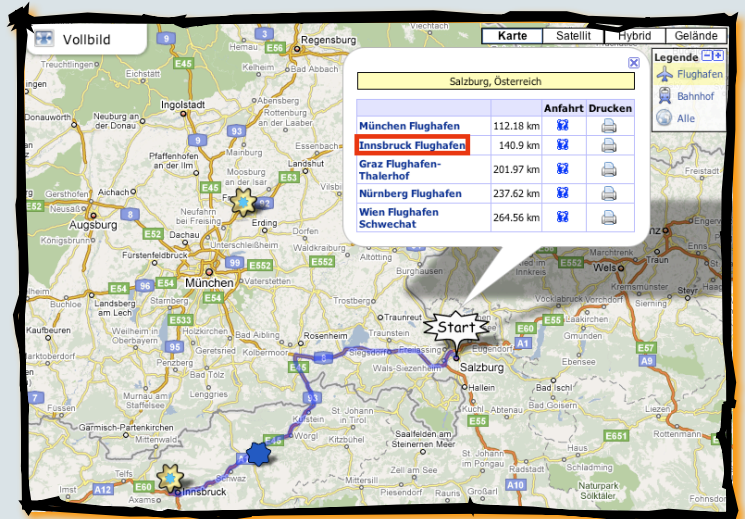


[Proceed to Demonstration -->](#)

## Vicinity search in combination with the legend

If you look for a certain category of locations you have the possibility to select the required category in the legend. Only those locations are matched in the search.

[Proceed to demonstration -->](#)



## Print function

The displayed route can be printed. When clicking the printer-symbol the print preview is shown in a new window.

A customer specific banner can be implemented on top of the page.

In the standard layout the page shows the start- and destination address, a route description and two windows with maps of the route.

## Print preview shows interactive maps

Even in the print preview the maps are interactive. The visitor has the possibility to adjust the map sectors and zoom levels before printing the document.

The print function in the demonstration can be activated via the directions.

[Proceed to demonstration -->](#)

## Development outlook

### PinPoint combined with lines/KML

Some applications benefit from the presentation of lines or areas. PinPoint simplifies the integration of KML (bicycle-, hiking routes, etc.). With PinPoint you can easily integrate and display existing or self created KML from Google-Maps and Google Earth.

